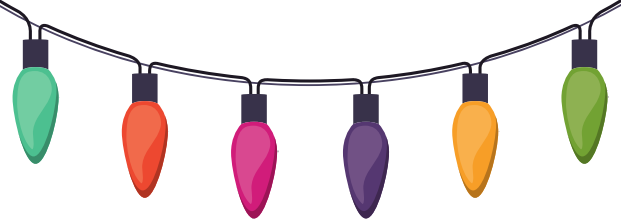


Hallmark

MOVIE BINGO



90s actress as lead (Oh hey, DJ Tanner)

Someone has a big secret

Love triangle with obvious outcome

Dead relative or spouse is mentioned

Rivals have to plan Christmas event together

Snow starts falling

Quaint motel or lodge needs a remodel or Christmas will die

Hunky but obscure love interest

Santa sighting



Big city girl moves to cutesy small town

Town with an obviously made up Christmas name

Love interest is employer



Snowed in with someone grouchy

Cynic is filled with Christmas spirit

Fake engagement alert



Mom & Pop business failing; needs Christmas miracle

Runs into old love interest in the ol' hometown

Garland... everywhere

Man in a flannel shirt

Blizzard causes a delay or complete chaos

Someone has a Christmas Eve deadline

Enemies turned lovers



Town has an unhealthy obsession with their annual traditions

Snowy lodge or country barn setting

Hallmark

MOVIE BINGO



Snowed in with someone grouchy

Someone has a big secret

Love triangle with obvious outcome

Dysfunctional family dynamic

Hunky but obscure love interest

Town has an unhealthy obsession with thier annual traditions

Enemies turned lovers



Rivals have to plan Christmas event together

Runs into old love interest in the ol' hometown

Blizzard causes a delay or complete chaos

Mom & Pop business failing; needs Christmas miracle

Cynic is filled with Christmas spirit



90s actress as lead (Oh hey, DJ Tanner)

Glaringly obvious product placement

Fake engagement alert



Town with an obviously made up Christmas name

Santa sighting



Tree lighting ceremony

Someone has a Christmas Eve deadline

Big city girl moves to cutesy small town

Man in a flannel shirt

Love interest is employer

Quaint motel or lodge needs a remodel or Christmas will die

Dead relative or spouse is mentioned

Hallmark

MOVIE BINGO



Dead relative or spouse is mentioned

Someone has a big secret

Love triangle with obvious outcome

Santa sighting



Cookie baking or ice skating montage

Small town charm wins over snobby big city CEO

An almost kiss

Rivals have to plan Christmas event together

Runs into old love interest in the ol' hometown

Blizzard causes a delay or complete chaos

Tree lighting ceremony

Big city girl moves to cutesy small town



Glaringly obvious product placement

Quaint motel or lodge needs a remodel or Christmas will die

Dysfunctional family dynamic

Town with an obviously made up Christmas name

90s actress as lead (Oh hey, DJ Tanner)

Mom & Pop business failing; needs Christmas miracle

Enemies turned lovers



Hunky but obscure love interest

Fake engagement alert



Someone is trying desperately to get home

Cynic is filled with Christmas spirit

Snowed in with someone grouchy